

MAYOOR SCHOOL, AJMER
Computer / VI / Annual Examination / Saturday / February 28, 2009
(Time Allowed: 1½ hours)

GNK
SBC

MM: 40

Name : _____

Roll Number: _____

Instructions:

- i. All Questions are compulsory.
- ii. Please check that this question paper contains 2 Sections.
- iii. Section A is the Objective Paper and Section B is the Subjective Paper.
- iv. Section A to be answered in the Paper.
- v. Section B answers to be written in the Answer Sheets.
- vi. Please check that this question paper contains 7 printed pages.

Section A

I. Fill in the blanks:

Marks ::5

1. An easy way to get web site visitors to take notice of text, is to create a scrolling _____.
2. A _____ allows you to display multiple web pages on one screen at the same time.
3. When you click a hyperlink in the contents frame on the left, the page pointed to by that hyperlink opens in the main frame on the right. This can be done by using the _____ option.
4. We can set the Background music by opening the _____ dialog box.
5. We are using the _____ version of OpenOffice .org.

II. Multiple Choice Questions::

Marks ::10

- 1) I want the marquee text to continuously move from left to right, which **marquee behavior** should I select?
 - a) Alternate
 - b) Slide
 - c) Scroll
 - d) Any of the above ()
- 2) You can change how long it takes in milliseconds for the marquee to begin scrolling by entering a number in the _____ text box.
 - a) Amount
 - b) Delay
 - c) Align with text
 - d) Repeat ()
- 3) The page that is initially displayed in a frame when a site visitor browses to a frames page containing the frame is known as,
 - a) The frames page
 - b) The initial page

- c) The front page
d) None of the above ()

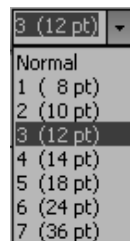
- 4) Linux has an official mascot,
a) The Gnu
b) Windows
c) Tux, the Linux Penguin
d) None of the above ()

- 5) OpenOffice.org is a complete office suite similar to the Microsoft Office suite. It features,
a) Open Office.org Word Processor
b) Open Office.org Impress
c) Open Office.org Calc
d) All of the above ()

- 6) Which one of the following is not a Free and Open Source Software,
a) Open Office.org Word Processor
b) TuxPaint
c) MS Paint
d) Open Office.org Draw ()

- 7) The following is not a free operating system,
a) Unix
b) Linux
c) Microsoft
d) None of the above ()

- 8) What can we set by using the drop down box shown here,
a) Font style
b) Font size
c) Font color
d) None of the above ()



- 9) To specify absolute referencing, we use the symbol _____.
a) @
b) ^
c) #
d) \$ ()

- 10) The B in cell address B2 refers to,
a) Row B
b) Column B
c) Any of the above
d) None of the above ()

III. State True or False. (T or F)

Marks::10

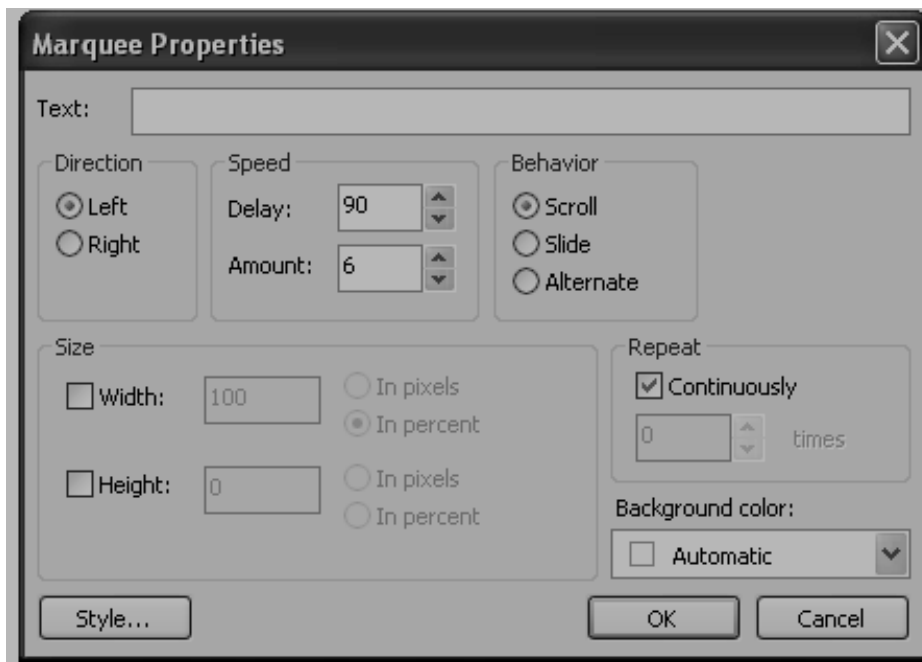
1. You can hyperlink a marquee.
2. You cannot change the background color of the marquee.
3. Select **Slide Behavior**, for the marquee to scroll into view and stop on the page.
4. You cannot change the width of the rectangular region that the marquee will occupy on the screen.
5. Each of the frames in a frameset can display a different Web page.

Name : _____

Roll Number: _____

- 6. A template is a set of predesigned formats for text and graphics on which new Web pages and sites can be based.
- 7. You cannot select an existing page in any of the frame.
- 8. At any point of time we can delete a frame or add a new frame, in the frameset page.
- 9. OpenOffice.org Calc is a presentation software.
- 10. We cannot change the colours and formatting of cells in Open Office.org Calc.

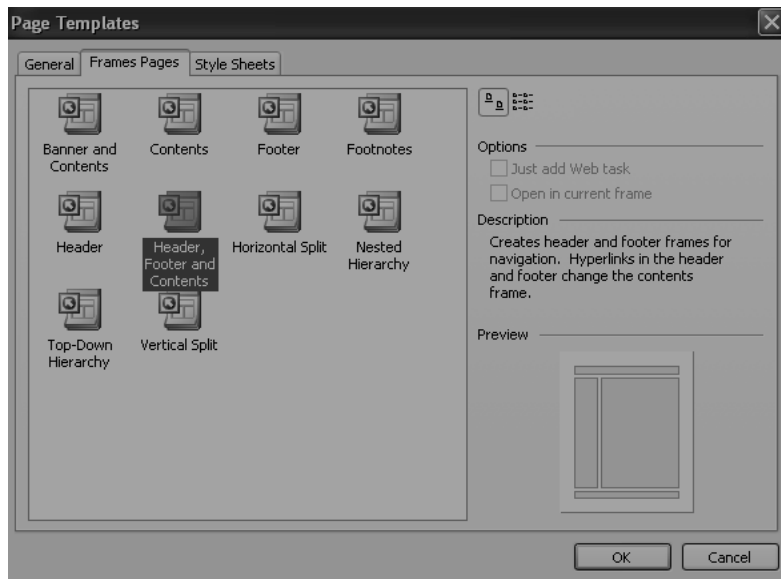
IV. Look at the pictures below and answer the following questions.



Marks::0.5x4

1. What can you do using the above dialog box and mention any 3 properties that you can set using this dialog box.

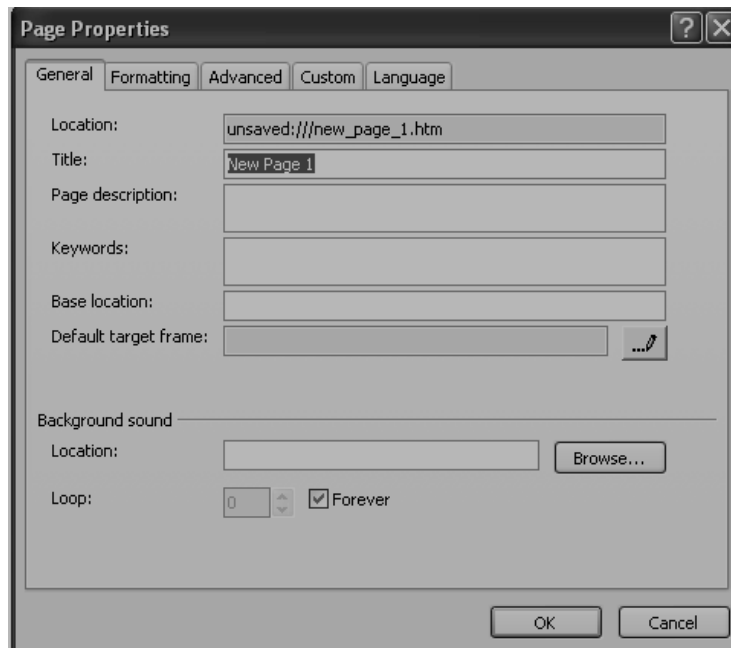
Ans. _____



Marks::1.5+0.5

2. Why do we need frames? How many frames are there in the Header, Footer and Contents Frame Page style.

Ans. _____



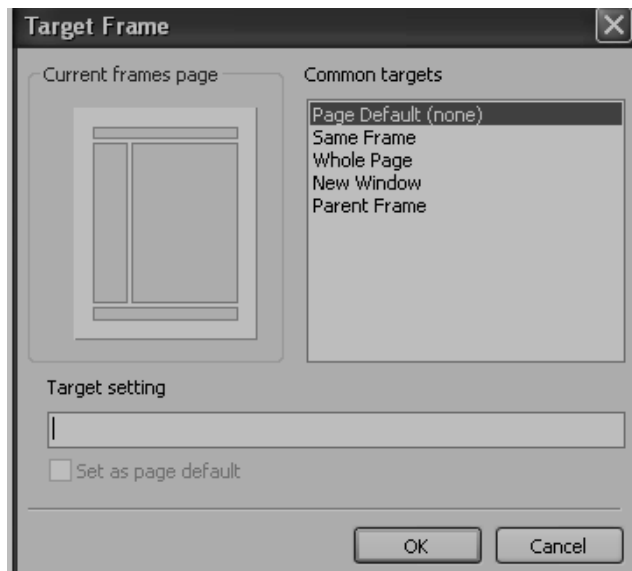
Marks::0.5+0.5+1

3. Name the above shown dialog box. How can we get this dialog box? Mention any 2 properties that you can set by using this dialog box.

Ans. _____

Name : _____

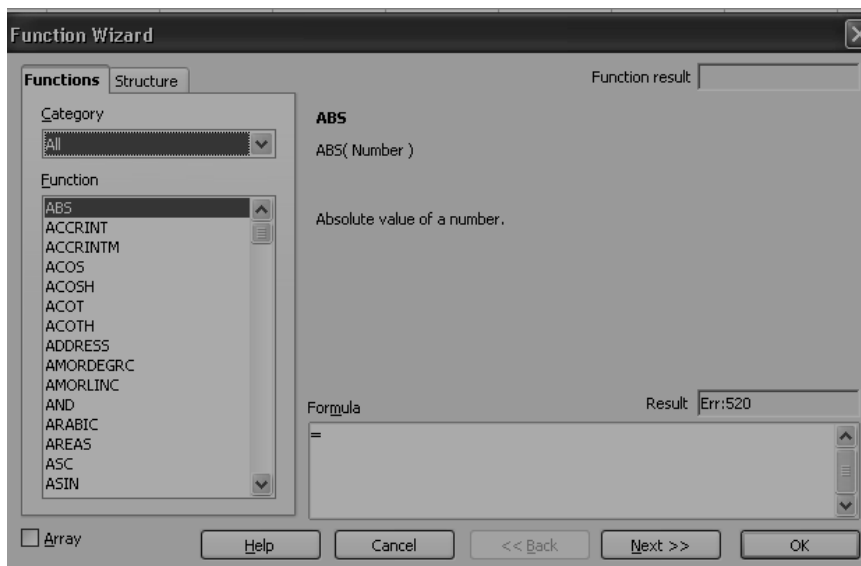
Roll Number: _____



Marks::0.5+1+0.5

4. Name the above shown dialog box. How can we get this dialog box? What can you set by using this dialog box.

Ans. _____



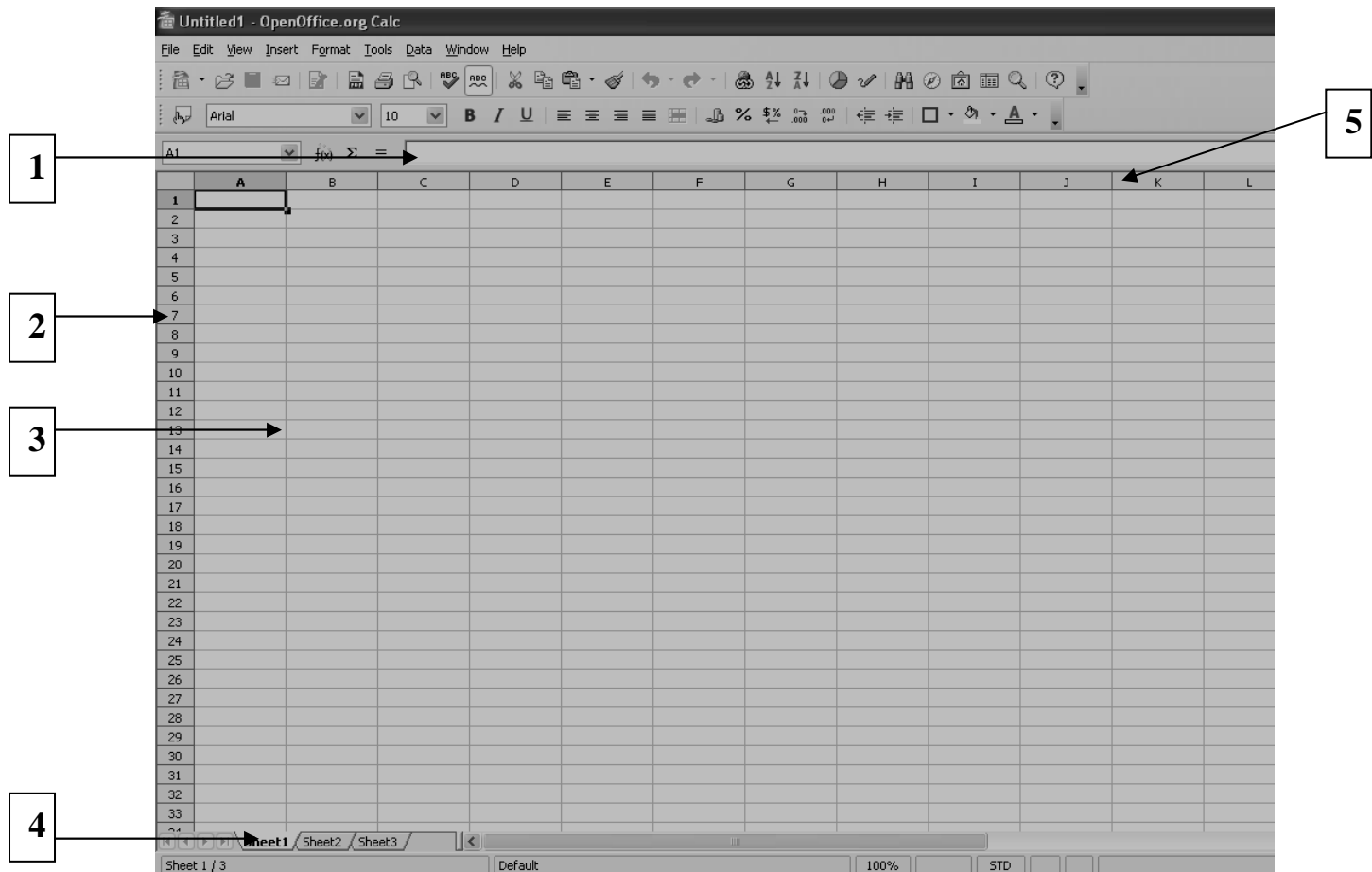
Marks::1+1

5. Name the above shown dialog box. What is the function of this dialog box?

Ans. _____

V. Label the parts of the Open Office.org Calc window.

Marks::5



1. _____

2. _____

3. _____

4. _____

5. _____

MAYOOR SCHOOL, AJMER
Computer / VI / Annual Examination / Saturday / February 28, 2009
(Time Allowed: 1½ hours)

MM: 20
GNK – 155

VI A, C – GNK
VI B, D – SBC

Section B

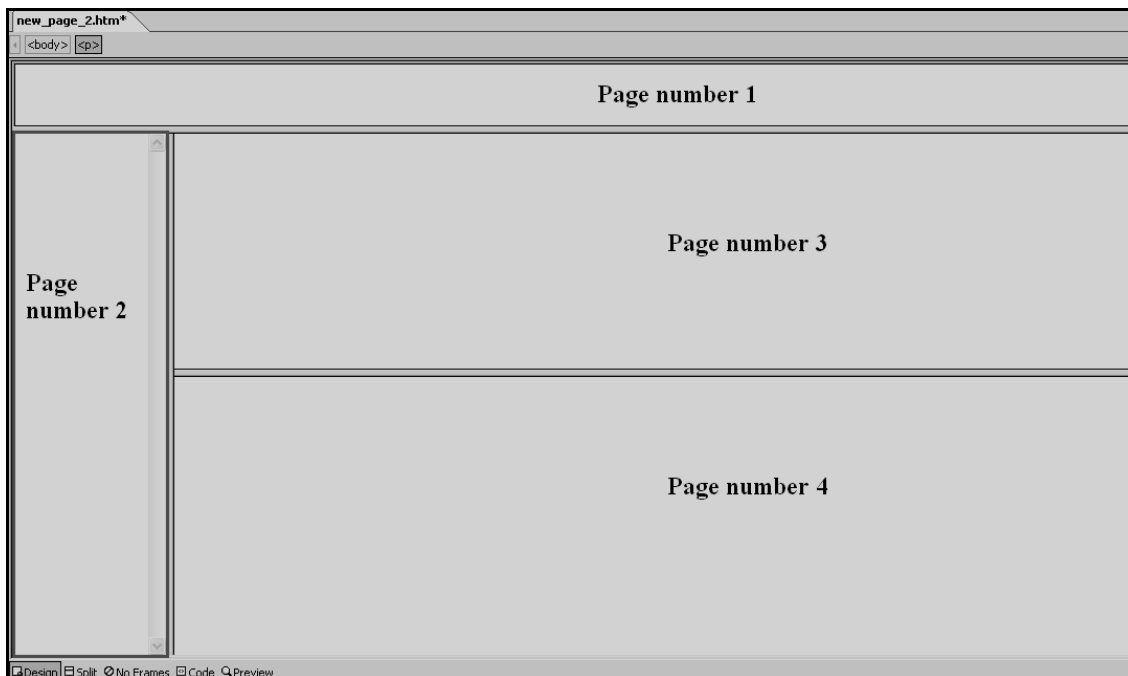
Name : _____

Roll Number: _____

I. Answer the following in 40-60 words each.

Marks: 20

1. What is the importance of marquee?
2. Why would you like to have a background music in your website?
3. Your friend Raghav created a page with four (4) frames as follows. Later he realised that he needed three (3) frames not four (4). Can you help him ? How ?



4. How can we create invisible frames? What is the use of invisible frames?
5. What do you mean by Free and Open Source Software (FOSS)?
6. If given a choice would you opt for FOSS ? Give 3 reasons.
7. What do you mean by a spreadsheet package?
8. Explain any 2 features of OpenOffice.org Calc.
9. What is the difference between Absolute and Relative referencing? Explain with the help of examples.
10. Explain any one situation in detail, where you would use OpenOffice.org Calc. Give reasons.